

3157v3: Rolling Code 2-Channel with RESET Kit

General Guidelines for Electronic Kits and Assembled Modules

Thank you for choosing one of our products. Please take some time to carefully read the important information below concerning use of this product. The assembly and operating instructions are on the following pages.



WEEE Directive (Waste Electrical and Electronic Equipment)

Notice To All European Union Citizens. Important environmental information about this product.

The crossed out wheeled bin symbol on this product, package or documentation indicates that disposal of this product after its lifecycle could harm the environment. Do not dispose of this product (or batteries if used) as unsorted municipal waste. It should be disposed by a specialized company for recycling.

The unit should be returned to your distributor or to a local recycling service. Please respect the local environmental rules. If in doubt contact your local authorities about waste disposal rules.

Safety: General rules concerning safe use of our Kits or Modules.

To ensure your safety, please observe these safety measures. In no way are these complete. As safety requirements vary, please check with your local authorities, in order to comply with local requirements. If in doubt, seek the help of a qualified person.

Battery or wall-adaptor operated devices are safe devices. They do not require special attention unless mains voltage is connected to an output e.g. a relay.



To ensure electrical safety, and also protection from fire or personal injury, make sure your mains operated equipment complies with these safety hints:

- Use a suitable plastic enclosure. If a metal enclosure is used, make sure it is properly earthed.
- Use a power switch if the device consumes more than 10W. Use a double pole switch for mains operated, transformer-less kits.
- Mount a fuse in series with the mains switch. Use a slow blow (T) 50mA fuse for transformers up to 10W and a 100mA fuse for transformers up to 20W.
- Use a mains input connector, or a robust power cord with a clamp.
- Internal wiring carrying mains voltages must have a minimum cross-sectional area of 0.5mm².

If supplied, attach the power rating label near the power cord of the device and fill-out the mains voltage, frequency, power consumption and fuse values.

Troubleshooting and Support

90% of non working kits are due to poor soldering.

We operate a Get-You-Going service for non-working kits but there is a charge based on the time and components needed to complete the repair. Quite often it is not economically viable for us to repair and it is cheaper to supply a new ready made product at full cost.

Disclaimer

Quasar Electronics reserves the right to change product specifications or to discontinue products without notice. Quasar Electronics cannot be held responsible for any loss or damage, direct or indirect, which might occur from the use of a product. Quasar Electronics Kits or Modules are intended for educational and demonstration purposes only. They are not intended for use in commercial applications. If they are used in such applications the purchaser assumes all responsibility for ensuring compliance with all local laws. In addition, they are not suitable for use as or as a part of life support systems, or systems that might create a hazardous situation of any kind.

3157v3: Rolling Code 2-Channel with RESET Kit

This product is a 2-channel version of Kit 3180, our 4-channel UHF Remote Control kit. We simply removed two of the 4 channels from Kit 3180 and used a 2-button Transmitter unit. It is assembled. **You the buyer** has to **electronically** connect the Tx unit with the Rx board by the procedure outlined in the following paragraph.

Also we have added a Reset to each channel when in **TOGgle** mode. Thus, for example, a garage door motor could be started when the **TOGgle** relay is activated then it will automatically cut off when the door has travelled its full movement and it hits a switch which resets / turns off the corresponding relay. The user does not have to stand watching the door then press the button on the transmitter unit again when he thinks it has open 'enough'.

Up to 15 Transmitter units can be connected to/learnt by one Rx unit. Connect power to the receiver board. Press the **LEARN** tact switch on the main board and then simultaneously press button 1 (the small button) of the Tx unit. You only have to do this briefly for under a second. But note it takes about **15 seconds** for the two units – the TX and the RX - to connect electronically and recognize each other. (During this 15 seconds it seems that one and only one keypress of the Tx unit will be recognised. Just disregard this. Wait the full 15 seconds until the two units have connected. Do not press the LEARN button again. Just wait 15 seconds.) Note the **VALID DATA** LED comes on when you press the tact switch.

Tx units attached to any Rx unit can be electronically **unattached** by pressing the LEARN button continuously for 8 seconds. The **VALID DATA** LED is on during these 8 seconds. As soon as the LED goes off then you know that all Tx units previously recognized by the Rx unit have now been unattached electronically from the Rx unit.

For the full details about the circuit and an explanation of rolling code, download "3180.pdf" from <http://www.quasarelectronics.com/pdf.htm> (remember this kit is 'half' of a 3180 - two of the 4 relay positions shown in the 3180 schematic are not present).

WARNING! Ensure 12Vdc power supply is connected with correct polarity to avoid damage!
Operation: If working properly when you depress the small button 5V will appear at pin 6 counting from the top (non-earth end) of the PCB. Pressing the big button causes an output of 5V at pin 8. When you release the buttons the voltage goes back to zero. This 5V is used by the 4013 for latching and momentary operation.

If you want more details about the Microchip technology behind these Tx & Rx's then go to: <http://www.quasarelectronics.com/ds.htm> and download files AN662.PDF and AN665.PDF
Technical details about the Automicro devices can be found on this page (file AUTOMICRO.PDF) <http://www.quasarelectronics.com/pdf/automicro.pdf>

We sell Tx unit (TX-3316RS) and Rx unit (RX-3302D2-15) separately as 30A17-Tx and 30A17-Rx.

Relay Outputs: Each relay output is rated to switch resistive loads up to 240Vac/28Vdc @ 5 Amps max.
WARNING: Mains voltages can be lethal! Board must be housed in a suitable isolating enclosure.
Construction, installation, testing and commissioning should only be attempted by competent persons and in accordance with local regulations. Ensure antenna wire cannot short to mains.
For general information on the relay outputs see http://www.quasarelectronics.com/pdf/relay_faq.pdf

Technical Support: mailto: support@quasarelectronics.com if you have any problems.

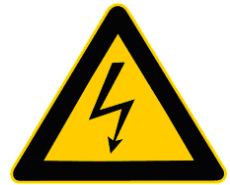
See our 10-channel UHF Remote Control Kit 3181 at <http://www.quasarelectronics.com/3181.htm>

GENERAL RELAY INFORMATION

Warning! Risk of Electric Shock!

This information concerns kits and modules with relay outputs. TO USE THE RELAY OUTPUTS SAFELY YOU MUST OBSERVE THE MAXIMUM VOLTAGE AND CURRENT LIMITS QUOTED IN THE **PRODUCT DOCUMENTATION** (this is because the board design may not be rated to switch the maximum voltage and current limits printed on the relay itself or specified in the relay manufacturer's data sheet).

Controlling mains equipment with relay outputs must be treated with extreme caution. Electric shocks can cause severe and permanent injury or even death. Construction, installation, testing and commissioning should only be attempted by suitably qualified persons, or under the supervision of a suitably qualified person. These products are not suitable for children. Before connecting mains powered equipment to the relay outputs please check with the relevant authorities in order to ensure compliance with all current safety regulations. Many areas of the assembly may operate at mains voltage. A suitable isolating enclosure must be used. Exposed screw terminal blocks on some products must be insulated to prevent contact with exposed metallic parts at mains potential. Connected equipment should be suitably fused.



You will find relay outputs on many of the kits and modules that we sell. A relay is an electrically operated on/off switch. The voltage and current limits specified in the product documentation generally relate to resistive or light inductive loads.

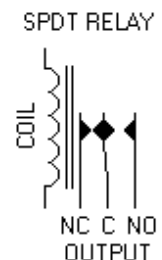
Relay Terminals

Most boards have SPDT (Single Pole Double Throw) style relays. These have three outputs:

C = Common

NO = Normally-Open contacts connect the circuit when the relay is activated; the circuit is disconnected when the relay is inactive. It is also called a Form A contact or "make" contact.

NC = Normally-Closed contacts disconnect the circuit when the relay is activated; the circuit is connected when the relay is inactive. It is also called a Form B contact or "break" contact.

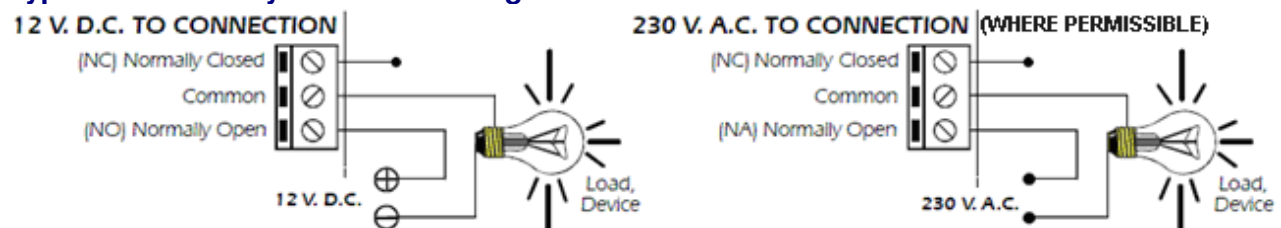


Connecting the Device you want to Control

You must provide an external power source to the device you want to control. No voltage is present at the relay terminals (remember it is just a switch). The relay is normally connected in *series* with the positive (+) power wire of the device you want to control.

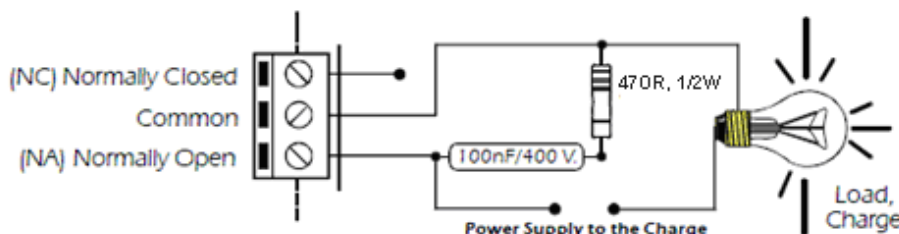
In this case, the positive wire from the power source should be connected to Common. Then either the NO or NC terminal (as appropriate for your purpose) is connected to the positive (+) wire going to the device you want to control. The negative (-) wire does not connect to the relay at all. It goes directly from the power source negative output to the device negative (-) terminal.

Typical SPDT Relay Connection Diagrams

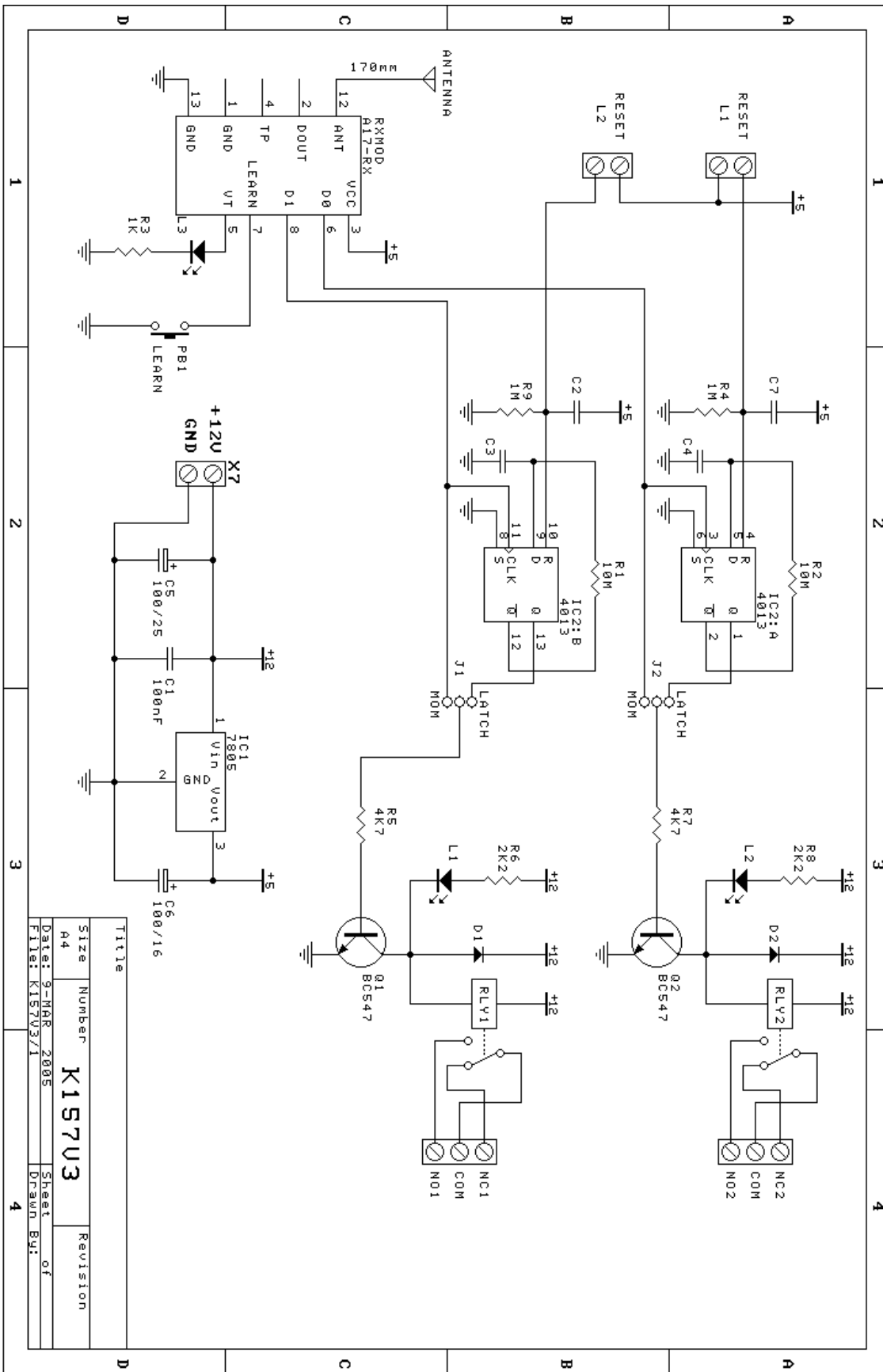


Anti-Spark SPDT Relay Connection Diagram

Sometimes the connected equipment can cause arcing across the relay contacts. This must be corrected by installing a resistor and capacitor (not supplied) between the two contacts of the relay as shown below. Component values are for 230Vac mains.



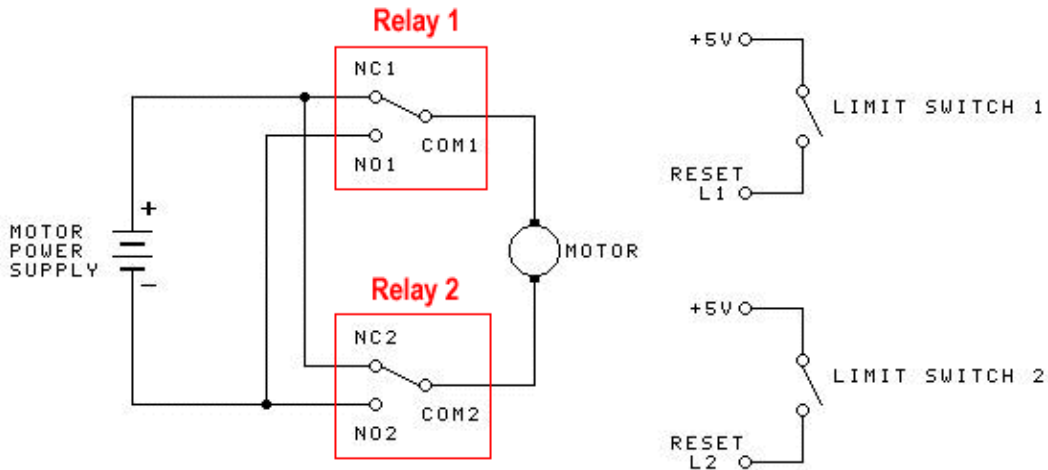
3157v3: Rolling Code 2-Channel with RESET Kit



Title		Revision	
Size	Number	K157U3	
A4			
Date:	9-MAR-2005	Sheet	of
File:	K157V3/1	Drawn By:	

UHF Remote Control Reversible DC Motor with Limit Switches

The wiring diagram below shows how two relays can be used to make a reversible DC motor controller. The example below is based on using our 2-Channel UHF Remote Control Relay Board with Limit switches (Order Code [3157](#) - see ordering details below).



Notes:

Motor must be a DC type - AC motors won't work.

Our UHF remote control relay boards 3157 (2-channel for 1 motor) or 3180 (4-channel for 2 motors) can be used as both have Reset inputs for limit switches.

They can be set to either momentary or latching mode. Either will work with this setup – the only proviso is that all channels are set the same.

If set for momentary mode, the button has to be kept pressed until the limit switch is reached.

If set for toggle mode, the button has to be pressed just once for the motor to run until the limit switch is reached.

Limit switches are normally open types. Limit switch 1 is operated when it reaches the 'end of travel' caused by channel 1 relay being operated. Similarly for limit switch 2 and channel 2 relay.

Ordering

Both UHF Remote Control Relay Boards can be ordered online at:

3157 at <http://www.quasarelectronics.com/3157.htm> (2-Channel version)

3180 at <http://www.quasarelectronics.com/3180.htm> (4-Channel version)